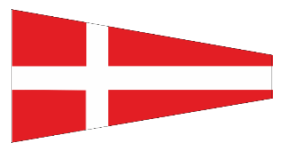




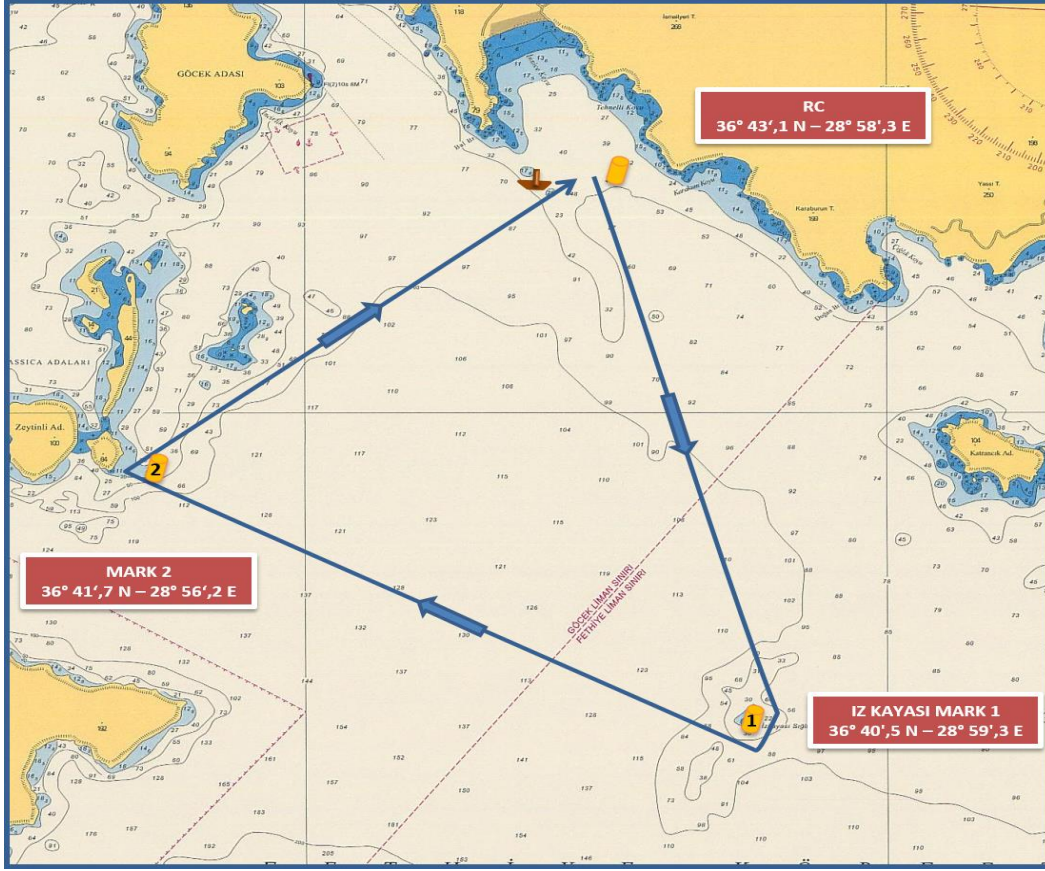
# GÖCEK YACHT CLUB

## COURSE 4A - ROTA 4A

Coastal courses / Coğrafik rotalar



### COURSE (ROTA) 4A - IRC CLASSES



### IRC CLASSES

START (İNLİCE)

(36°43',1 N – 28°58',3 E)

İZKAYASI MARK 1 to starboard

MARK 2 to starboard

FINISH (İNLİCE)

(~ 8,0 NM)

START (İNLİCE)

(36°43',1 N – 28°58',3 E)

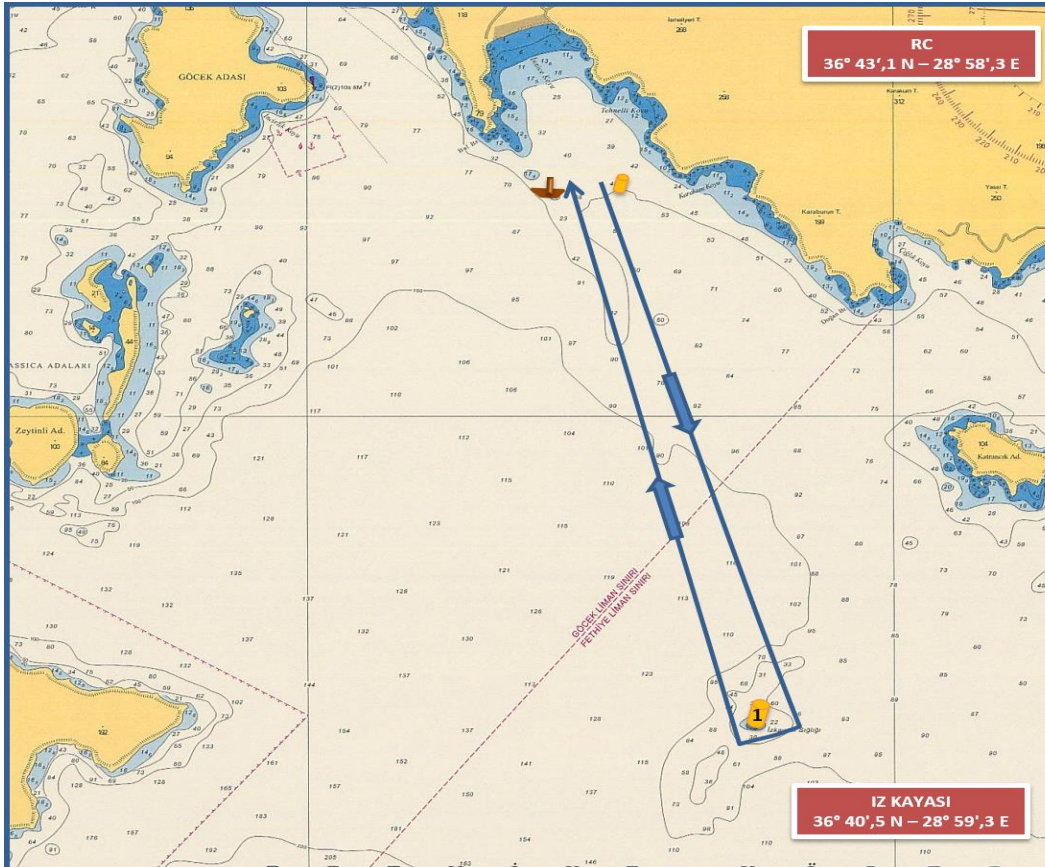
İZKAYASI ŞAMAND. 1 sancakta

ŞAMANDIRA 2 sancakta

FINISH (İNLİCE)

(~ 8,0 DM)

### COURSE (ROTA) 4A – IRC CHARTER & CHARTER & FRESHMAN CLASSES



### IRC CHRT. & CHARTER & FRESHMAN CLASSES

START (İNLİCE)

(36°43',1 N – 28°58',3 E)

İZKAYASI MARK 1 to starboard

MARK 2 to starboard

FINISH (İNLİCE)

(~ 6,0 NM)

START (İNLİCE)

(36°43',1 N – 28°58',3 E)

İZKAYASI ŞAMAND. 1 sancakta

ŞAMANDIRA 2 sancakta

FINISH (İNLİCE)

(~ 6,0 DM)

The place of RC boat and marks at the starting and finishing lines are approximate.

Start ve finish hatlarındaki şamandıra ve komite botu yerleri yaklaşıkştir.