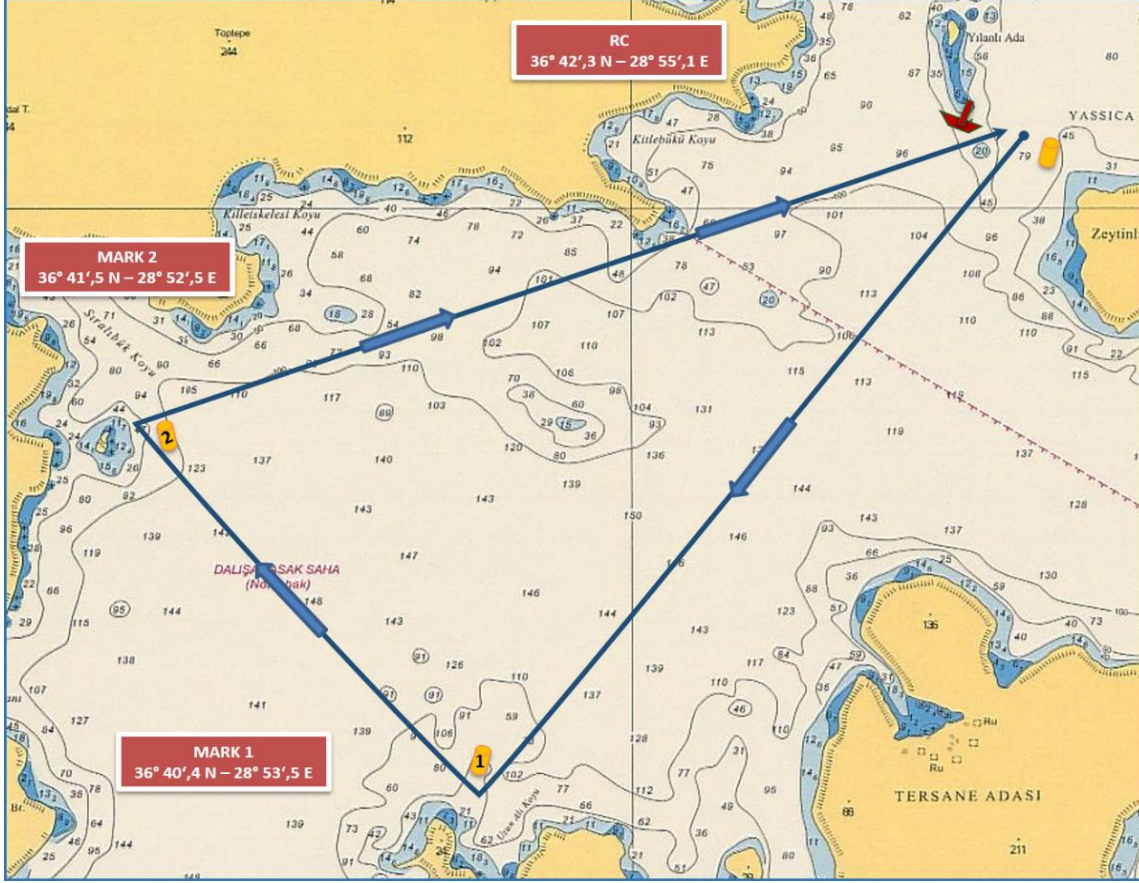


COURSE (ROTA) 3B - IRC CLASSES

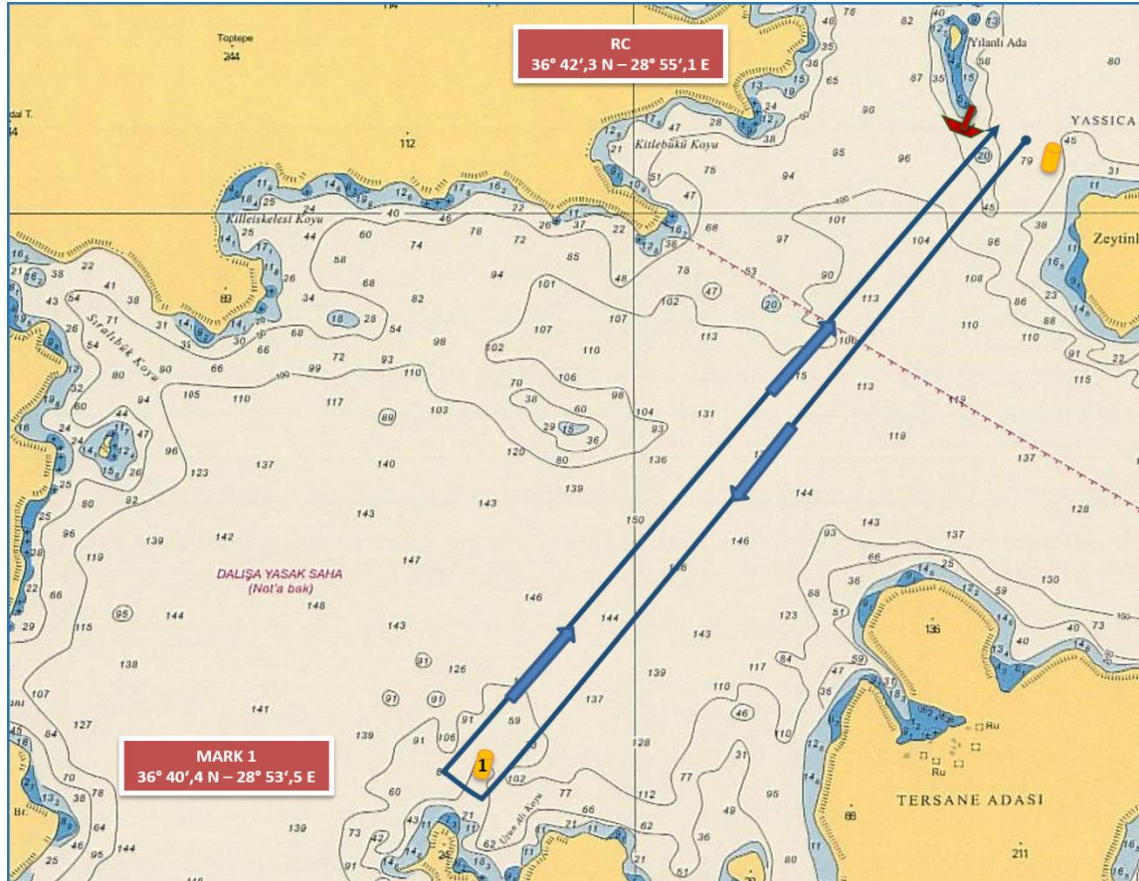


IRC CLASSES

START (YILANLI ISLAND)
(36°42',3 N - 28°55',1 E)
MARK 1 TO STARBOARD
MARK 2 STARBOARD
FINISH (YILANLI ISLAND)
(~ 6,0 NM)

START (YILANLI ADA)
(36°42',3 N - 28°55',1 E)
ŞAMANDRA 1 SANCAKTA
ŞAMANDIRA 2 SANCAKTA
FINISH (YILANLI ADA)
(~ 6,0 DM)

COURSE (ROTA 3B) – IRC CHARTER & CHARTER & FRESHMAN CLASSES



IRC CHRT. & CHARTER & FRESHMAN CLASSES

START (YILANLI ISLAND)
(36°42',3 N - 28°55',1 E)
MARK 1 TO STARBOARD
FINISH (YILANLI ISLAND)
(~ 4,0 NM)

START (YILANLI ADA)
(36°42',3 N - 28°55',1 E)
ŞAMANDRA 1 SANCAKTA
FINISH (YILANLI ADA)
(~ 4,0 DM)

The place of RC boat and marks at the starting and finishing lines are approximate.
Start ve finish hatlarındaki şamandra ve komite botu yerleri yaklaşıkştir.