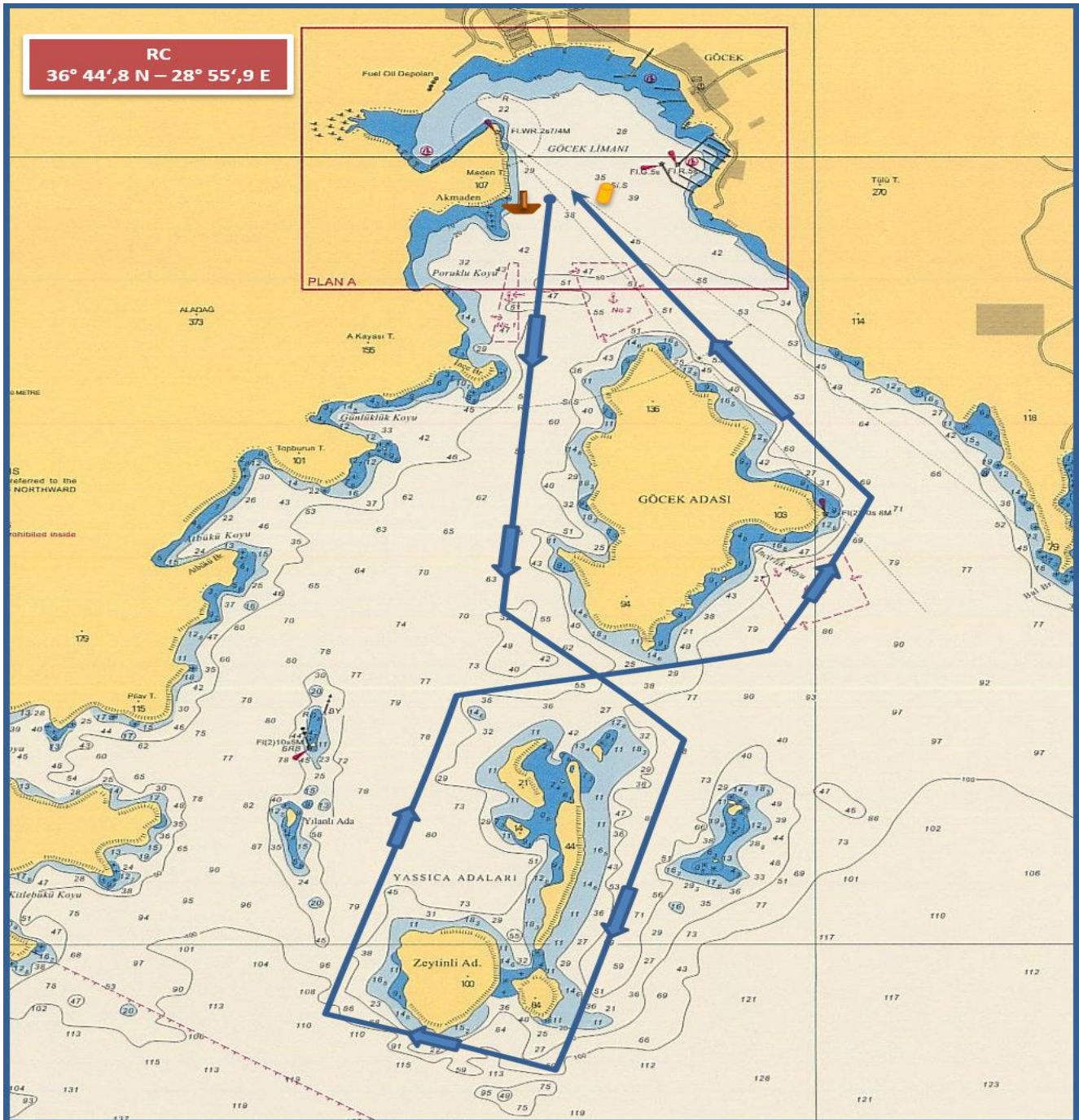


### COURSE (ROTA) 2G - IRC & IRC CHARTER & CHARTER & FRESHMAN CLASSES

#### ALL CLASSES

- START (GÖCEK) pass GÖCEK ISLAND to port, pass YASSICA ISLAND to starboard, pass ZEYTİNLİ ISLAND to starboard, pass YASSICA ISLAND to starboard, pass GÖCEK ISLAND to port, FINISH (GÖCEK)  
DISTANCE :~ 9,0 NM
- START (GÖCEK), GÖCEK ADASI iskelede geçiş, YASSICA ADALARI sancakta geçiş, ZEYTİNLİ ADA sancakta geçiş, YASSICA ADA sancakta geçiş, GÖCEK ADASI iskelede geçiş, FINISH (GÖCEK koy içi) MESAFE : ~ 9,0 DM



The place of RC boat and marks at the starting and finishing lines are approximate.  
Start ve finish hatlarındaki şamandıra ve komite botu yerleri yaklaşıkştir.